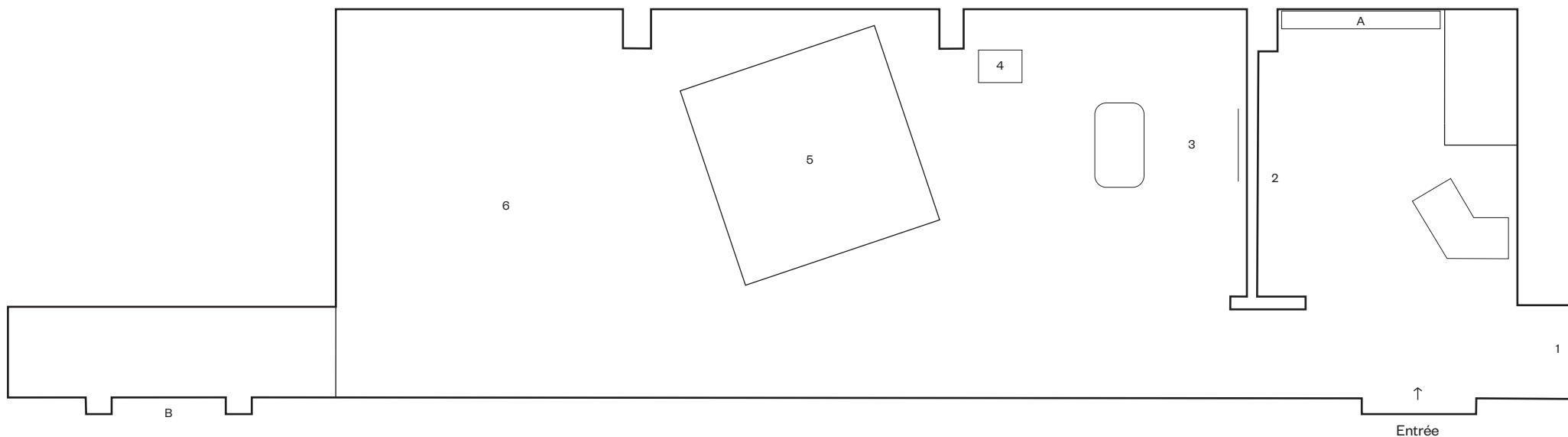


LE CORPS FAIT GRÈVE 20/05 – 24/07/2021

THE BODY GOES ON STRIKE

BABI BADALOV, AMIE BAROUH, FLORIAN FOUCHÉ, HEDWIG HOUBEN

CURATED BY / COMMISSARIAT : ÉMILIE RENARD



Exhibition artworks

- 1 Babi Badalov
Exemption certificate, 2020
Acrylic on fabric
Courtesy Galerie Poggi
- 2 Posters with texts by: Jean de La Fontaine, Gaëlle Obiégly,
No Anger, Julie Pellegrin, Anna Tje, Florentien Schevers,
Florian Fouché, Pierre Bal-Blanc, Babi Badalov, Amie
Barouh, Clara Schulmann
Visual and graphic design by: Léna Araguas & Alaric
Garnier
- 3 Hedwig Houben
Phewzlopffffff, 2019, video, 19'
Homer, 2019, plaster bench
Finger Tool, 2019, aluminium
Collections Frac Île-de-France

- 4 Babi Badalov
Bureaucratic Diaries, 2010 - 2014
Ephemera and administrative documents in thirteen
plastic display folders
Collections Centre national des arts plastiques
- 5 Amie Barouh
I can change but not 100%, 2019
Colour video, 40'24
Amok Films Productions
Projection shed : Peaks, architectes
- 6 Florian Fouché
The Janmari Manifesto, 2020 - 2021
Various materials, sculptures, videos
With the support of the Centre national des arts
plastiques
Please find details at the back of this sheet

In situ artworks

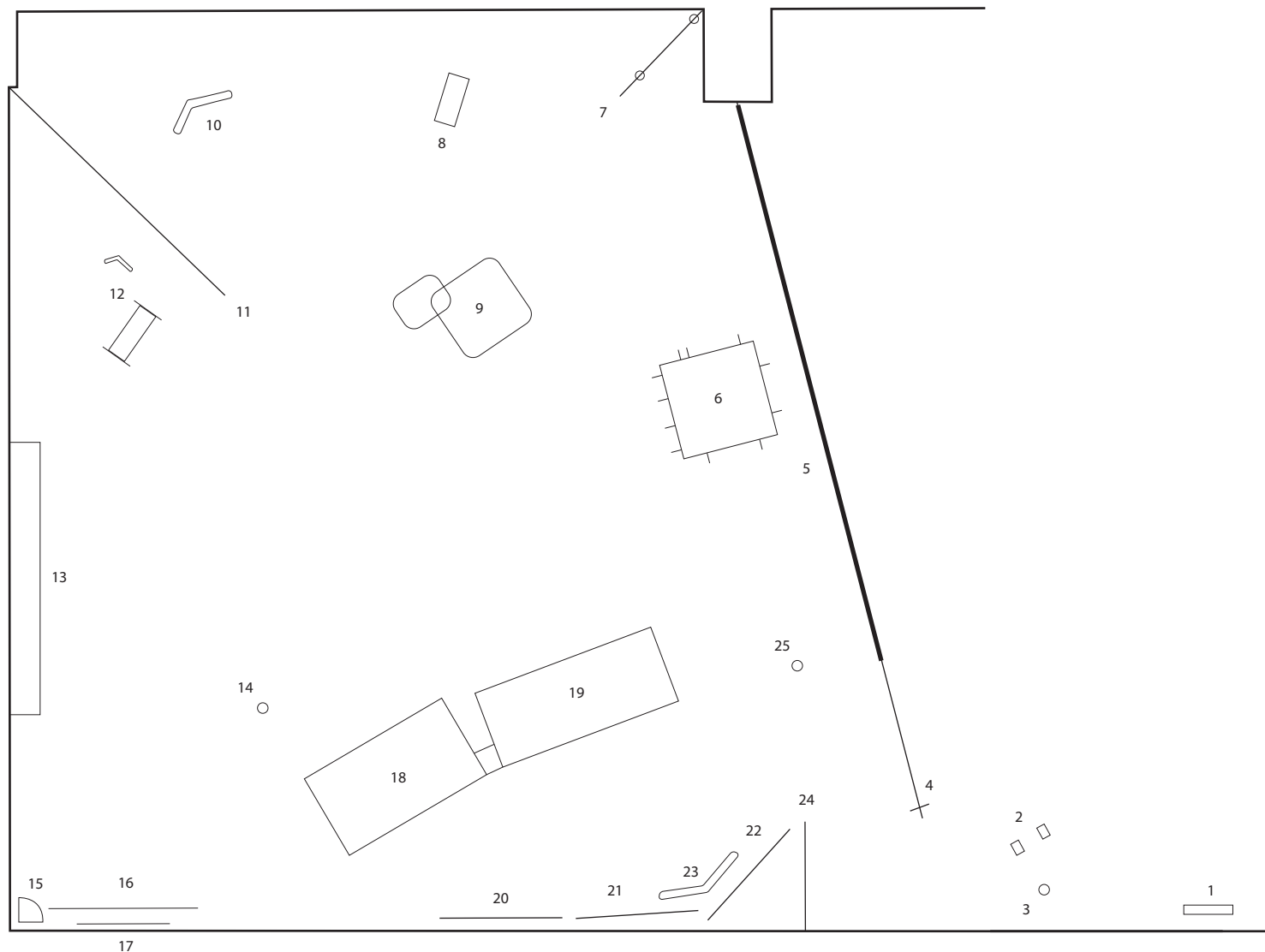
- A Romain Grateau
Grand tourisme à injection, 2021
Reinforced concrete bookcase: Portland cement, sand,
mineral fillers, steel, oxides and pigments, encaustic
- B Sylvie Fanchon
BONJOURSINOUSDISCUSSIONS, 2021
Series of 10 sentences in whitewash on windows
Courtesy Galerie Maubert

LE CORPS FAIT GRÈVE 20/05 - 24/07/2021

THE BODY GOES ON STRIKE

BABI BADALOV, AMIE BAROUH, FLORIAN FOUCHÉ, HEDWIG HOUBEN

CURATED BY / COMMISSARIAT : ÉMILIE RENARD



Florian Fouché, 2021

- 1 *Le perroquet pour Philippe*
- 2 *Ce gamin, là*
- 3 *Objets repères ?*
- 4 *Lève jambe*
- 5 *Peaux*
- 6 *Le couvert*
- 7 *Mur*
- 8 *3ème jambe (d'après Paul Schilder)*
- 9 *Agent-e en pause*
- 10 *Atèle pour Philippe*
- 11 *La vaisssssselllle*
- 12 *Objets repères ?*
- 13 *L'incontinent*
- 14 *Risque de fausse route*
- 15 *Combinaison*
- 16 *Rouge S.M.I.T. Bichat / Rose S.S.R. Val Rosay*
- 17 *Lettre de Fernand Deligny à Jacques Lin, 1er décembre 1969*
- 18 *Chariot*
- 19 *Civière gauche*
- 20 *Vie assistée/vie (ré)éduquée/vie institutionnelle, 66'*
- 21 *Mémoire de Janmari, 48'*
- 22 *Philippe, 38'*
- 23 *Orthopédie*
- 24 *Planche anatomique (1,38 m x 1,38 m)*
- 25 *Objet repère ?*